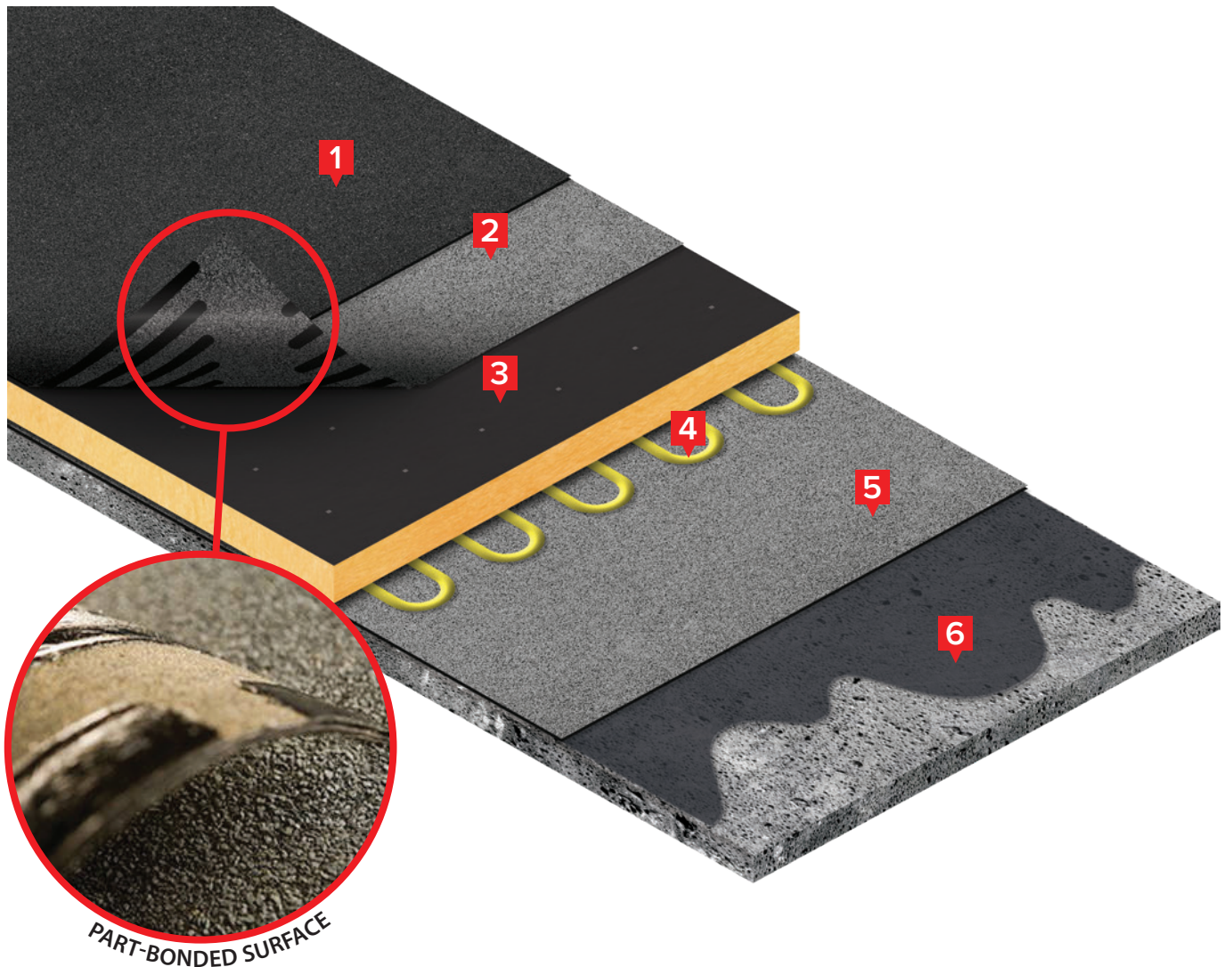


# 15 YEAR SYSTEM



- 1 WonderBuilds 5KG Capsheet
- 2 WonderBuilds Part-Bonded Torch-on Underlay
- 3 Bitumen Faced Insulation
- 4 WonderBuilds PU Insulation Adhesive
- 5 WonderBuilds Premium Vapour Control Layer
- 6 WonderBuilds QD Primer

**15**  
**YEARS**

MANUFACTURER'S  
WARRANTY



EASY INSTALLATION

## DETAILING:

- 1 WonderBuilds 5KG Black
- 2 WonderBuilds 3KG Film Underlay/Sand Underlay