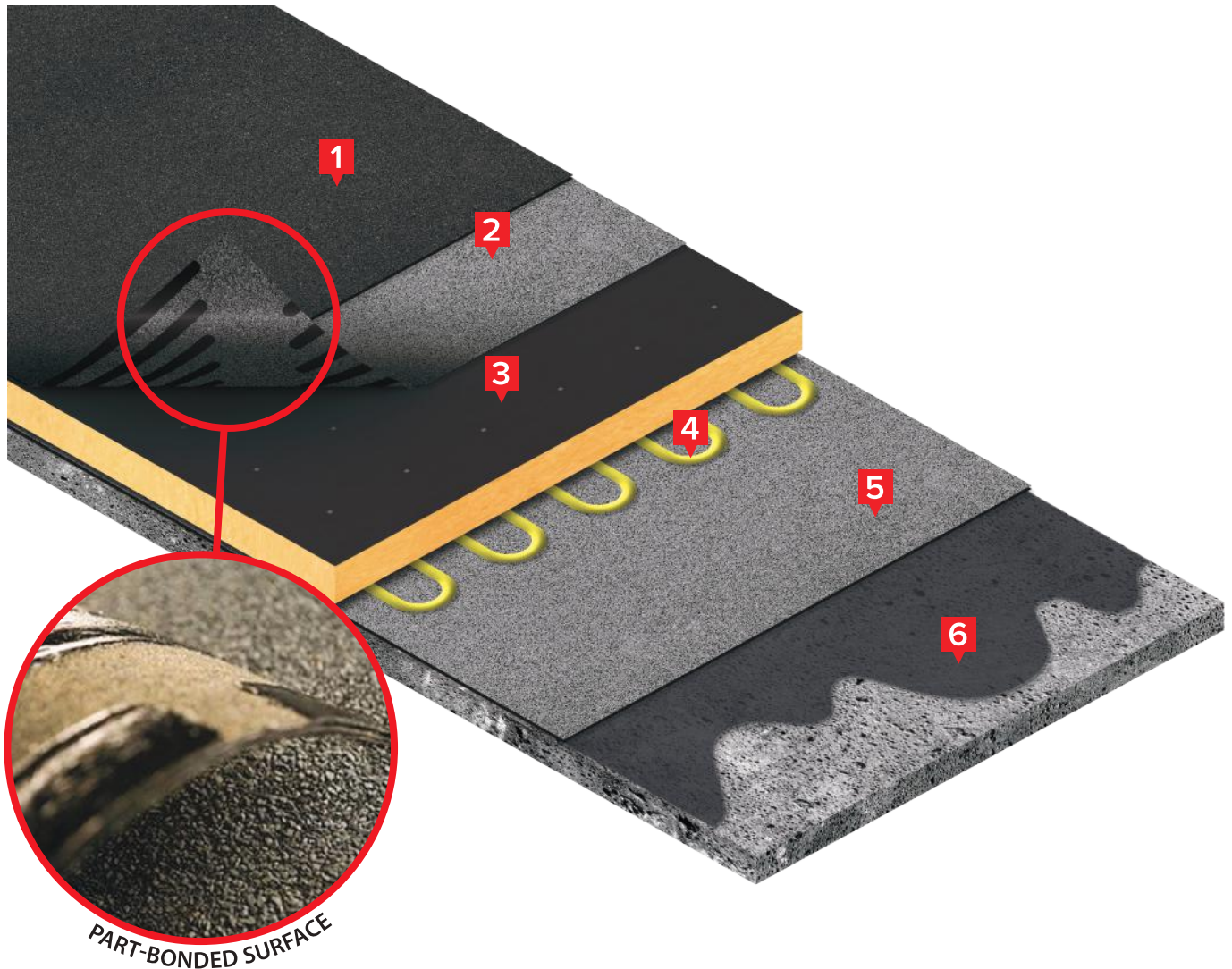


# 15 YEAR SYSTEM



- 1** WonderBuilds 5KG Black
- 2** WonderBuilds Part-Bonded Torch-on Underlay
- 3** Bitumen Faced Insulation
- 4** WonderBuilds Insulation Adhesive
- 5** WonderBuilds Premium Torch-on Vapour Barrier
- 6** Bitumen Primer

**15**  
**YEARS**

MANUFACTURER'S  
WARRANTY



EASY INSTALLATION

## DETAILING:

- 1** WonderBuilds 5KG Black
- 2** WonderBuilds 3KG Film Underlay/Sand Underlay